



CLASSIC LINE

COMPOSITE RESTORATION SYSTEM



Swiss quality product 
www.saremco.ch

SAREMCO
DENTAL

CONVINCING FOR MORE THAN 25 YEARS



SAREMCO MICROCID ETCHANT GEL

Transparent blue etching gel for enamel and dentine. Wets the enamel without forming drops or flowing. Visual in-process check (air bubbles indicate if the etch process is complete).

etches quickly and thoroughly

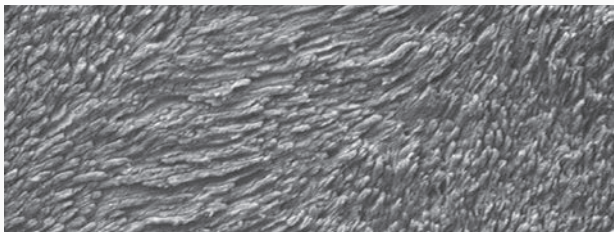
unique, visual in-process control

active like liquid phosphoric acid, therefore extremely easily rinsed off

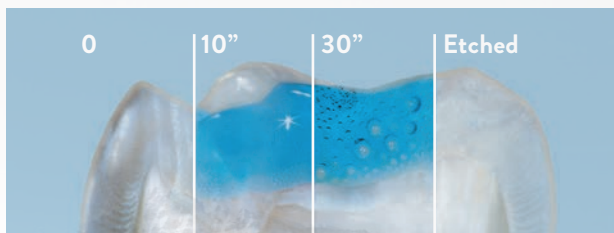
does not dry out during its shelf life

fine application tip ensures precise application

	REF
syringe, 2.5 ml	7310
stock package, syringe, 25 ml	7315



A reliable result: enamel conditioned with saremco microcid etchant gel. (Photograph University of Zurich 2001)



The visible build-up of CO₂ bubbles precisely indicates the very different times required for etching individual qualities of enamel.



JAMES-2 BOND

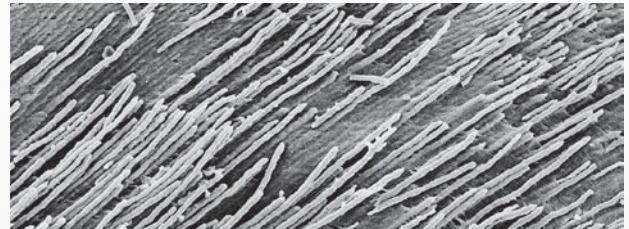
Solvent-free, light-curing one-component adhesive for enamel and dentine. Universal use, direct application with composites and compomers, sealing of sensitive cervical areas.

penetrates and covers in one working stage

excellent interlocking with the etched enamel and outstanding micromorphological enmeshing with the conditioned dentine

hydrophilic before curing, hydrophobic after curing

	REF
bottle, 5 ml	7413



Excellent penetration by james-2 into the dentine tubuli. (Photograph University of Chieti 2004)



SAREMCO MHC MICROHYBRID COMPOSITE

Light-curing microhybrid composite for Class I to V restorations in the anterior and posterior regions (also for indirect technique). Abrasion-resistant, radiopaque, firm, can be quickly and easily polished to a high lustre, active marginal adaptation, very fine filler with very low spread.

highly filled, radiopaque microhybrid composite

excellent abrasion resistance and high shade stability proven in over 20 years clinical use

positionally stable

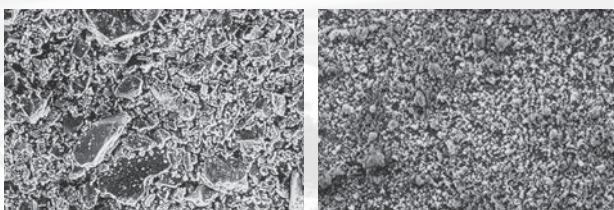
self-smoothing surfaces

microhybrid filler with a very narrow range of distribution

does not stick to the instrument

shade	syringe 1 x 4 g	shade	syringe 1 x 4 g
	REF		REF
A1	7210	B3	7245
A2	7220	C2	7250
A3	7225	C4	7260
A3op.	7227	D3	7270
A3.5/B4	7230	RB	7280
B1	7235	IB	7201
B2	7240		
mhc start-up set 1 x microcid etchant gel 2.5 ml, 3x mhc syringe 4 g (A1, A2, A3), 1 x james-2 5 ml, Accessories		7622	
mhc workstation 2x microcid etchant gel 2.5 ml, 6x mhc syringe 4 g (A1, A2, A3, A3.5/B4, B2, C2*), 1 x james-2 5 ml, Accessories – Instruction for use/flow chart. In a designer case.		7915	

* Available in different shade combinations.



Left: Conventional composite: filler photographed at 500x magnification.
Right: saremco microhybrid composite: filler photographed at 500x magnification (els extra low shrinkage is manufactured with the same filler.)
(Photographs University of Basel)



MICROSEAL

Sealing with the light-curing, low viscosity microseal provides reliable, long-term protection of small lesions and fissures against penetration of bacteria. High flow ability facilitates wetting and bubble-free application.

easily and precisely applied from a handy syringe

abrasion resistance and shade stability

quickly and easily polished to high lustre

available in two colours (incl. 6 Application tips)

shade	syringe 1 x 1 ml
	REF
A2op.	7741
transparent	7711

SAREMCO DENTAL GEMS SWAROVSKI

Jewellery of the highest quality and processing. Pain-free, gentle to the teeth and quick attachment and traceless removal.

with finest cut (ø 1.8 mm)

easily inserted and removed

available in 5 noble colours

	REF
diamond crystal, 10 pieces	7815
shimmershell, 5 pieces	7816
ruby, 5 pieces	7817
aqua marine, 5 pieces	7818
sapphire, 5 pieces	7819
start-up kit 10 x diamond crystal, 1 x shimmershell, 1 x ruby, 1 x aqua marine, 1 x sapphire	7813
colour kit 10 x diamond crystal, 10 x shimmershell, 10 x ruby, 10 x aqua marine, 10 x sapphire	7811
economy kit 50 x diamond crystal	7814

SAREMCO

DENTAL



OUR NEW, BRILLIANT APPEARANCE AND OPTIMISED PRODUCTS LEAD TO SUCCESS!

27 years after the company was founded SAREMCO Dental shines with new brilliance in 2014. The new logo and fresh appearance are in harmony with the high-quality products for dental filling treatment. In the early days the company developed into an established niche player in dental medicine. With brilliant products such as the composite "els extra low shrinkage®", inkeeping with the mood of the

times, SAREMCO provides proven allergy-patients and users with composite solutions free from TEGDMA and HEMA. Visit the newly designed website www.saremco.ch and convince yourself of the Swiss quality products.

SAREMCO Dental – We have never been so close to nature.

